

universal wideband up to 1GHz for round cables



miniature beads

Very small cylindrical suppressors for wire diameters below .25" (6,4mm). Handy for tight spaces, on-board suppression and general applications.

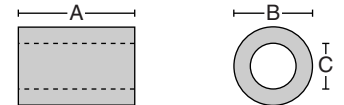


PART No.	A	B	C	IMPEDANCE IN OHMS
28B0137-3	.500 12,7	.138 3,5	.051 1,3	153 @ 100MHz
28B0138-7	.550 14,0	.138 3,5	.034 0,9	234 @ 100MHz
28B0200-4	.900 22,9	.200 5,1	.062 1,6	318 @ 100MHz
28B0250-1	.625 15,9	.250 6,4	.125 3,2	133 @ 100MHz
28B0300-0	.200 5,1	.300 7,6	.069 1,8	93 @ 100MHz
28B0385-2	.650 16,5	.385 9,8	.038 0,9	452 @ 100MHz
28B0350-0	.625 15,9	.343 8,7	.170 4,3	102 @ 100MHz
28B0355-0	.354 9,0	.787 20,0	.187 4,7	138 @ 100MHz
28B0375-3	.750 19,1	.375 9,5	.192 4,8	140 @ 100MHz
28B0562-2	1.125 28,6	.562 14,2	.250 6,4	257 @ 100MHz



large beads

Sizes up to 1.0" I.D. (25,4 mm) for applications where there are large cable bundles or where great amounts of suppression are required.

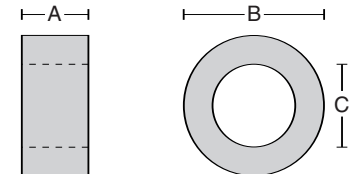


PART No.	A	B	C	IMPEDANCE IN OHMS
28B0563-0	.600 15,2	.562 14,2	.286 7,3	124 @ 100MHz
28B0625-0	.562 14,3	.625 15,9	.310 7,9	120 @ 100MHz
28B0625-1	1.125 28,6	.625 15,9	.310 7,9	225 @ 100MHz
28B0626-0	.625 15,9	.626 16,0	.133 3,4	300 @ 100MHz
28B0672-0	1.000 25,4	.672 17,1	.345 8,6	182 @ 100MHz
28B0686-2	1.125 28,6	.686 17,4	.375 9,5	196 @ 100MHz
28B0735-0	1.125 28,6	.735 18,7	.400 10,2	188 @ 100MHz
28B0736-0	1.125 28,6	.736 18,7	.430 10,9	176 @ 100MHz
28B1020-1	1.125 28,6	1.020 25,9	.505 12,8	225 @ 100MHz
28B1102-1	1.000 25,4	1.102 27,9	.620 15,7	147 @ 100MHz
28B1250-2	1.000 25,4	1.250 31,8	.750 19,1	151 @ 100MHz
28B1387-1	1.000 25,4	1.387 35,2	.882 22,4	142 @ 100MHz
28B2000-3	2.000 50,8	2.000 50,8	1.000 25,4	381 @ 100MHz



toroids

Cables can many times be assembled through the larger center opening even with connectors and plugs installed beforehand. Multiple cable turns through the center yield greater suppression and the flexibility to fine-tune a circuit. Up to 1.400" (35,6mm) I.D.



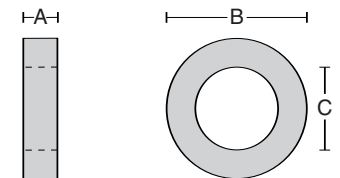
PART No.	A	B	C	IMPEDANCE IN OHMS
28B0870-0	.250 6,4	.870 22,1	.540 13,7	One Pass 25 @ 100MHz
28B0999-0	.500 12,7	1.000 25,4	.610 15,5	One Pass 83 @ 100MHz
28B1225-0	.612 15,5	1.225 31,1	.750 19,1	One Pass 97 @ 100MHz
28B1417-2	.500 12,7	1.417 36,0	.905 23,0	One Pass 89 @ 100MHz
28B2400-0	.500 12,7	2.400 61,0	1.400 35,6	One Pass 88 @ 100MHz



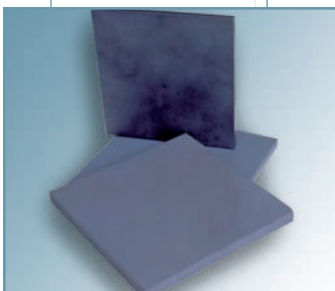
extra large toroids

WITH INSIDE DIAMETERS FROM 1.33" TO 6.66" (33,8 to 167 mm). Very large toroids for special purpose applications available in #28 material as shown below, and in #25 material.

Special order only; available by quotation. Please contact customer service with quantity information. Some items in stock.



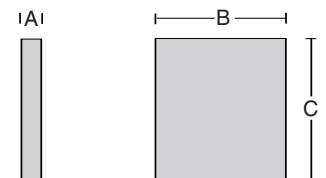
PART No.	A	B	C	IMPEDANCE IN OHMS
28B2275	.500 12,7	2.275 57,8	1.335 33,9	Per Application
28B2945	.500 12,7	2.945 74,8	1.775 45,1	Per Application
28B3170	.500 12,7	3.170 80,5	1.645 41,8	Per Application
28B4100	.500 12,7	4.100 104,1	2.650 67,3	Per Application
28B5945	.500 12,7	5.885 149,4	4.275 108,6	Per Application
28B5950	.500 12,7	5.885 149,4	3.675 93,3	Per Application
28B9210	1.000 25,4	9.210 233,9	6.665 169,3	Per Application



square tiles

For purpose-built electronic enclosures and architectural full room lining, these designs permit optimum absorption with minimum reflection. Very effective when used just in the corners of shielded rooms to dampen the effects of sharp corners.

Special order only; available by quotation. Please contact customer service with quantity information. Some items in stock.



PART No.	A	B	C	IMPEDANCE IN OHMS
21T3350	.248 6,3	3.350 85,0	3.350 85,0	Per Application
21T3937	.248 6,3	3.937 100,0	3.937 100,0	Per Application
21T4335	.248 6,3	4.335 110,0	4.335 110,0	Per Application